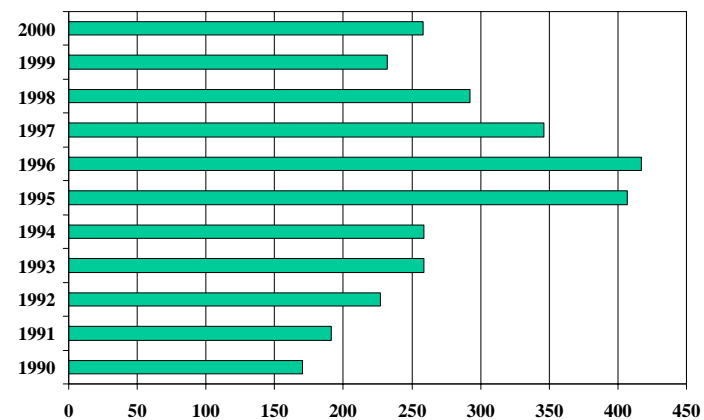


## Dane County Returning Prisoners

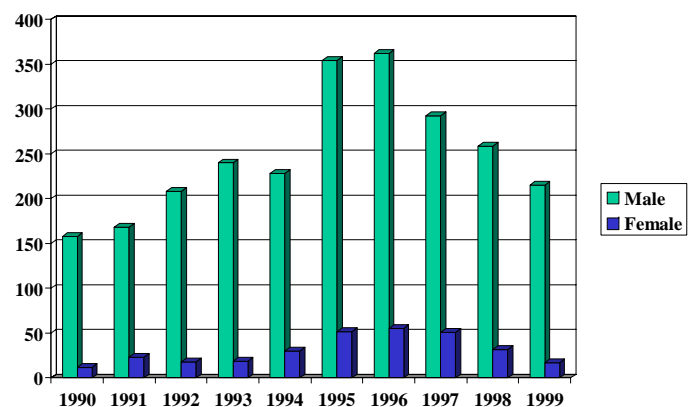
Data from Jan. 1990 – April 2000

## Dane County Returned Prisoners in 1990s

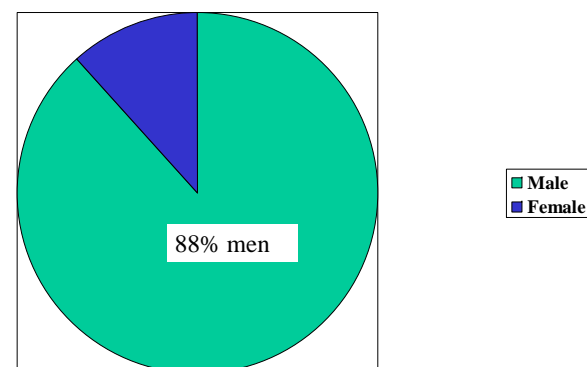


Note: 2000 estimated as three times the number for the first three months

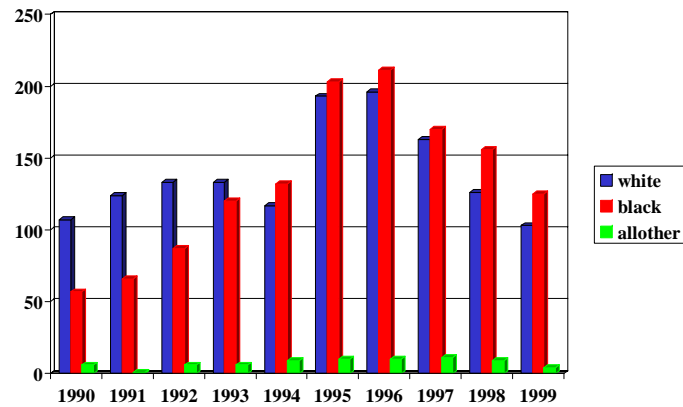
## Dane County returned prisoners in 1990s, by sex



## Sex of Returnees, 1997-1999

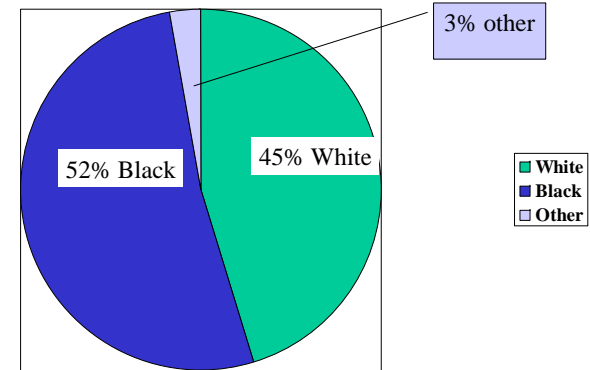


Dane County returned prisoners in 1990s, by race



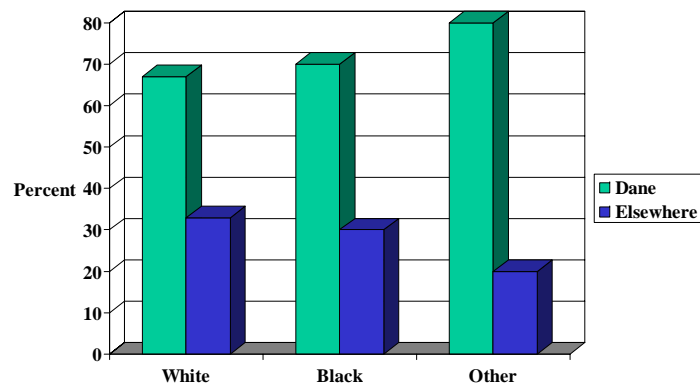
Proportion Black rose in the 1990s from 34% to 52%

Race of returnees, 1997-1999



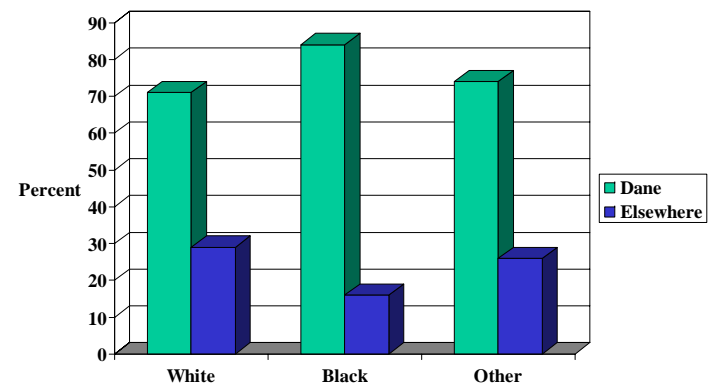
Racial mix is similar for men and women

Intended residence when released, for those sentenced in Dane County



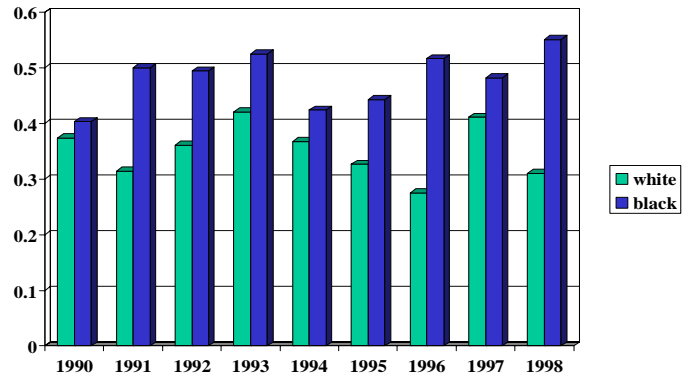
Large majority of those sentenced in Dane return to Dane; even more true for minorities than for Whites

Sentence location for prisoners if released to Dane County



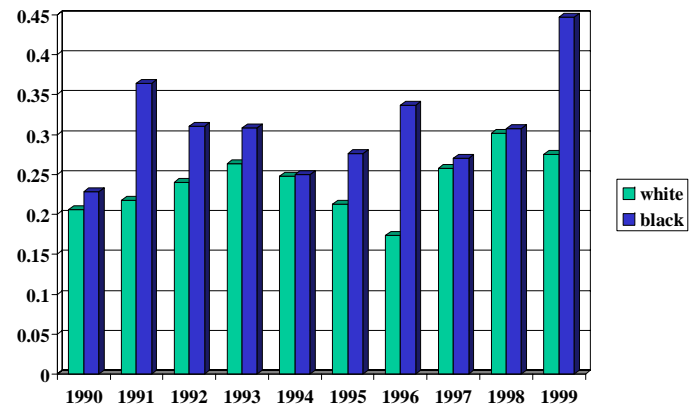
Large majority of those returning to Dane were sentenced here; even more true for Blacks than Whites

Proportion Dane returnees back in prison within two years (by exit year)



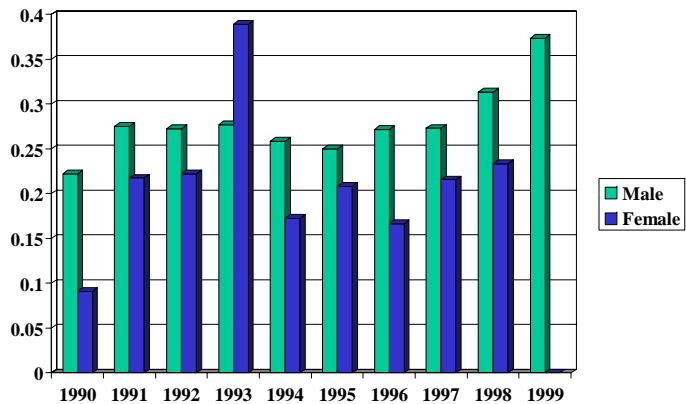
Blacks are more likely to go back to prison, but no clear time trend.

Proportion Dane returnees back in prison within one year (by exit year)



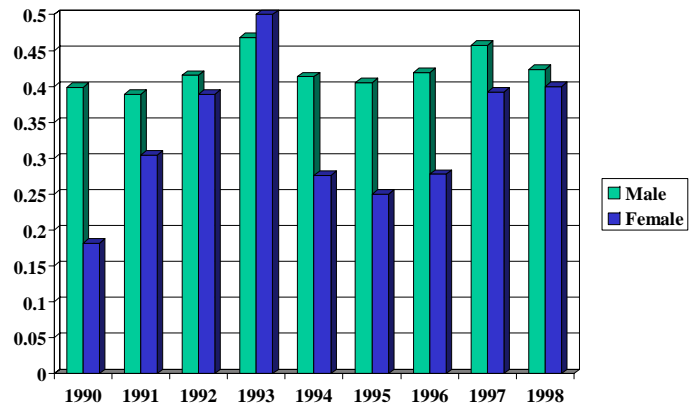
Blacks are more likely to go back to prison, but no clear time trend.

Proportion Dane returnees back in prison within one year



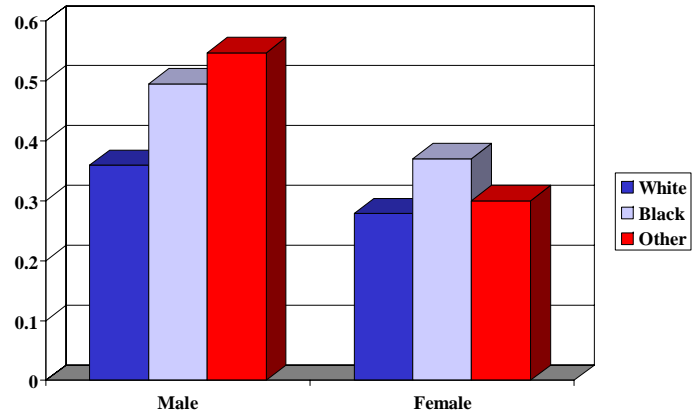
Men are generally more likely than women to return to prison within a year, no clear time trends

Proportion Dane returnees back in prison within two years

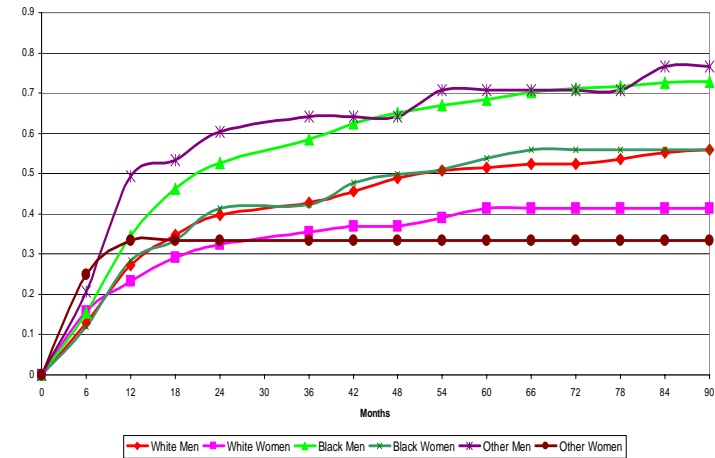


Men are generally more likely than women to return to prison within two years, no clear time trends

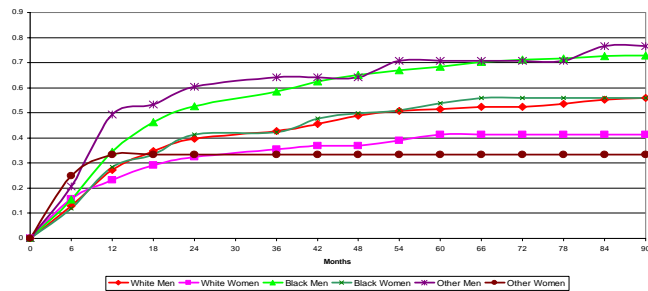
Proportion Dane 1990s prison returnees back in prison within two years



Proportion Back in Prison by months after release (6-month intervals)

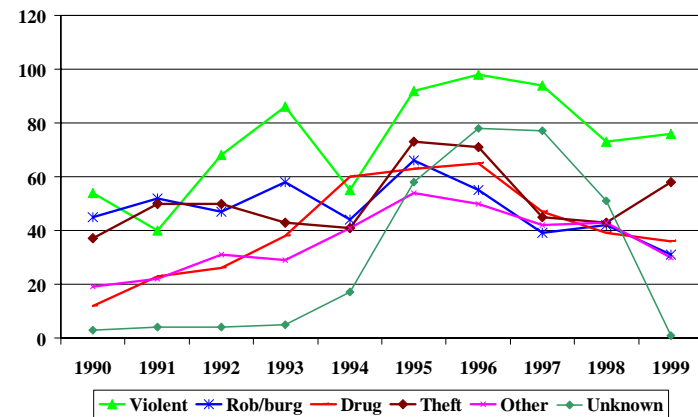


Proportion Back in Prison by months after release (6-month intervals)

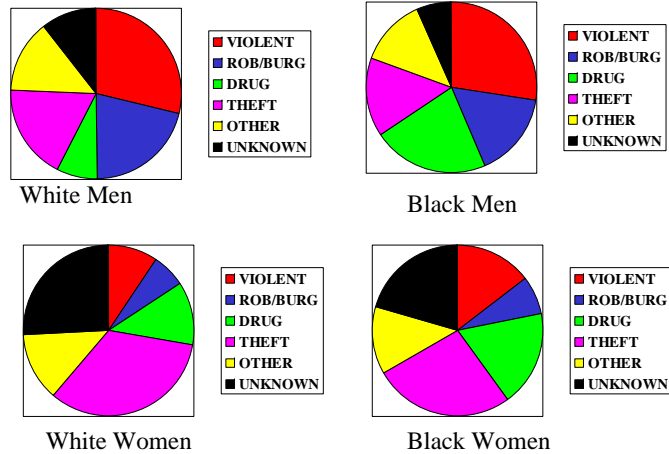


This chart shows the highest risk of return to prison is in the first 18 months. Rates for White & Other women flatten out most quickly, ending at 35-40%. Rates for White men and Black women continue to rise to about 55%. Rates for Black and Other men rise steadily, ending at over 70%

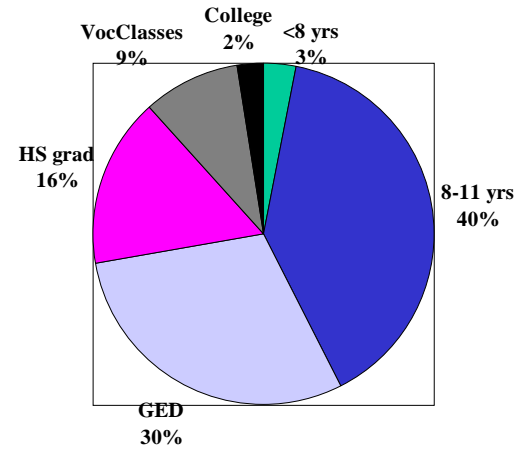
Offense of Dane prison returnees, all races & sexes



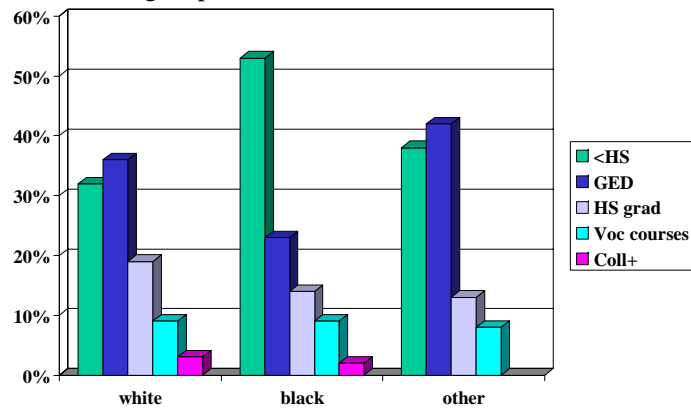
Offenses of returning prisoners, by race/sex group



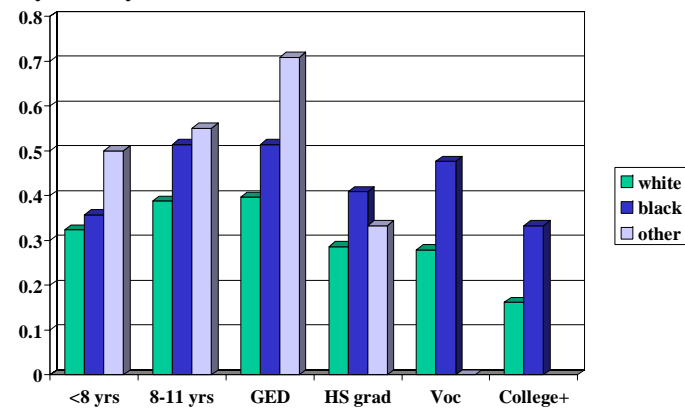
Education of Dane returning prisoners



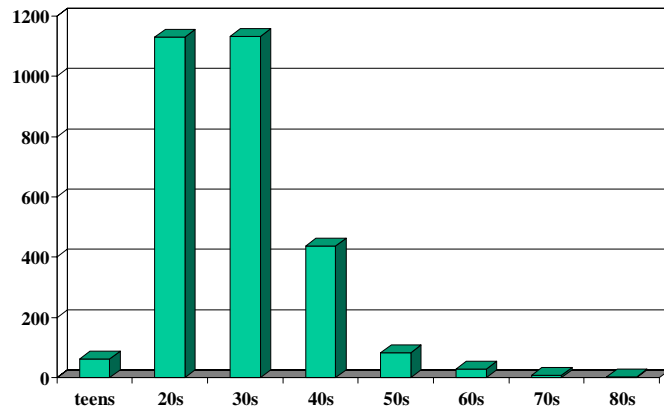
Education by race for Dane returning prisoners (percentage within racial groups)



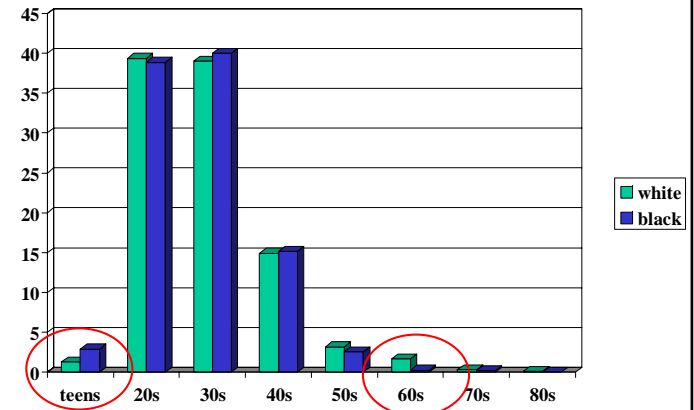
Proportion of Dane returned prisoners back in prison within two years, by education & race



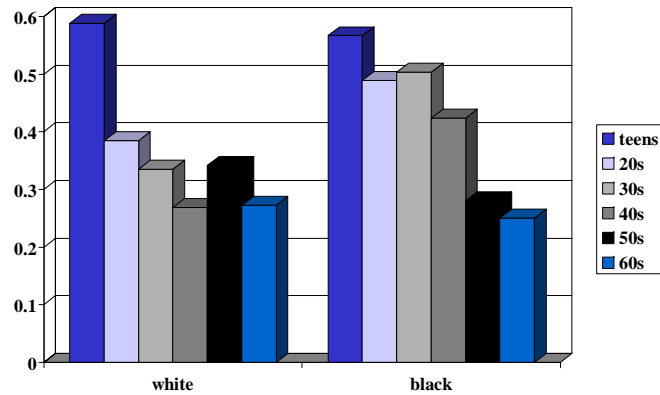
Age of Dane returning prisoners in the 1990s



Age distribution for returnees is similar by race, except at the youngest and oldest ages



Proportion of Dane returning prisoners back in prison within two years, by race & age



Back to prison is higher for Blacks than Whites in 20s to 40s; age matters less for Whites